



CONTACT US

☎ Mobile phone/ WhatsApp/ LinkedIn/ Wechat/ Facebook/ Instagram: +86 17360026591

✉ Anna@jingbang-tech.com

🔍 www.chengdumachining.com
<https://cdjingbang.en.alibaba.com>
<https://cncmachiningpart.en.alibaba.com>



Chengdu Jingbang Technology Co., Ltd.

Address: 3E-7,4F,WanMao Plaza NO.1251

WuHou District ChengDu CITY Sichuan, China

Factory: 407, 4th Floor, Building 1, Rose Avenue

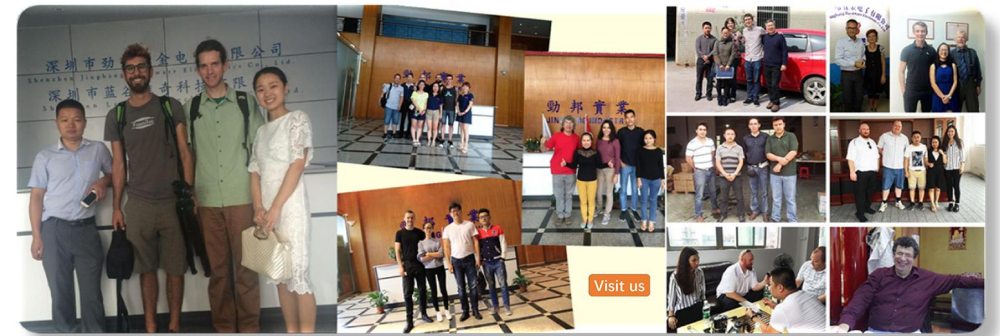
Logistics Port Hi-Tech Zone, Suining, Sichuan, China



Chengdu Jingbang Technology Co., Ltd.



J & B began its glorious journey in 2011 at Shenzhen, Guangdong, China. In the course of recent decades it has been essentially into manufacturing and supplying to automobile, mechanical, non-standard automation equipment, communication equipment, sports equipment, electrical engineering, over the globe.

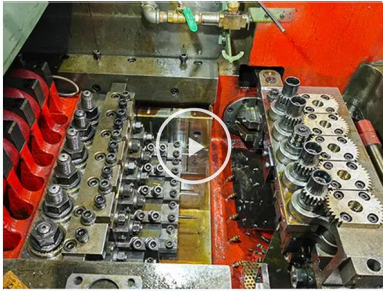




Company Profile

J &B is a main player in the worldwide business sector for the manufacturing, fasteners, automation equipment parts, forging processing, CNC numerical control processing and sheet metal processing. We also manufacture custom products as per your requirement, drawing, sample, sheet metal parts, turn parts component etc. we are group of engineering professionals, including 30 engineers and more than 120 employees, we committed to improving our clients' products. Our team uses over 110 processing and manufacturing equipment, and 45 testing and inspection equipment and a range of methods to analyze and optimize designs in a range of industries. provides world-class engineering, low rates, and communication skills that ensure that the job is done right the first time.

CNC Machining Part



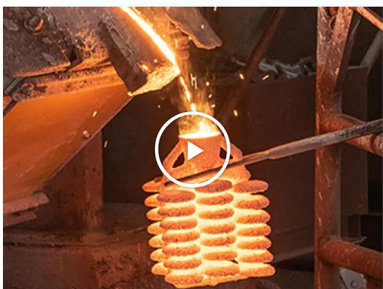
Cold heading is a very important machining process in metal processing, which has advantages such as saving materials, improving material strength, enhancing mechanical properties of parts, and improving production efficiency. This makes it widely used in the manufacturing industry to produce various high-strength and high-precision components, such as bolts, nuts, pins, rivets, shaft sleeves, step shafts, and other fasteners or links.



CNC machining in metal processing has the advantages of high-precision processing, complex shape processing, efficient production, flexibility and repeatability, Human error reduction, and data management and optimization. These advantages make CNC machining a widely used key technology in modern manufacturing, improving production efficiency, reducing costs, and promoting the development of industrial manufacturing.



Sheet metal processing is mainly used for processing thin metal materials, such as steel plates, aluminum plates, etc. Sheet metal processing includes various processes, such as cutting, punching, bending, stretching, stamping, welding, etc. These processes can be combined and selected based on the requirements and design of the parts to achieve the required shape and size processing. Sheet metal processing has the characteristics and advantages of high-precision processing, flexibility and adaptability, rapid manufacturing, and cost-effectiveness in metal processing. It is widely used in the production of various metal components, components and products, such as chassis, mechanical structures, electronic equipment casings, etc.



Precision casting has the characteristics and advantages of high precision, complex shape and structural casting, excellent surface quality, high production efficiency, and precise molding in metal processing. Precision casting is suitable for casting various metal materials, including non-ferrous metals such as aluminum, magnesium, copper, as well as commonly used metals such as steel and stainless steel. This enables precision casting to have a wide range of applications and meet the material requirements of different industries. It is widely used in fields such as aerospace, automotive manufacturing, and electronic equipment.



CAPACITY MATERIAL

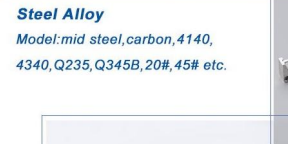
Aluminum Alloy

Model: 6061, 6063, 6082, 7075, 5052, A380 etc.



Stainless Steel

Model: ss201, ss301, ss303, ss304, ss314, ss316, ss416 etc.



Steel Alloy

Model: mid steel, carbon, 4140, 4340, Q235, Q345B, 20#, 45# etc.



Plastic

Model: ABS, PC, PE, POM, Delrin, Nylon, Teflon, PP, PEI, PEEK etc.

Customized Sheet Metal Fabrication



SURFACE TREATMENT



Anodized



Laser Engraving



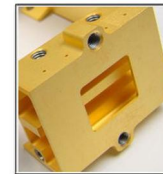
Sandblast



Brushing



Polishing



Plating



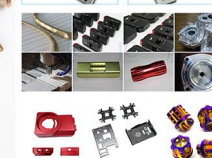
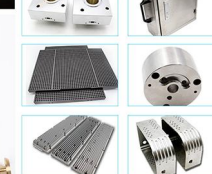
Oxide Black



Power Coated



Passivation



shaft collar



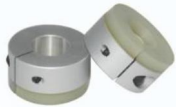
GCDKLH -----P.1



SCSMT -----P.2



MITFS/ MITK -----P.3



SCDKL -----P.4



MITFL/MITKS -----P.5



MQ -----P.6



SGLH -----P.7



GDSTG -----P.8



MITCN/GCCAW -----P.9



GCSNAW -----P.10



GDKZ/GDKLZ -----P.11



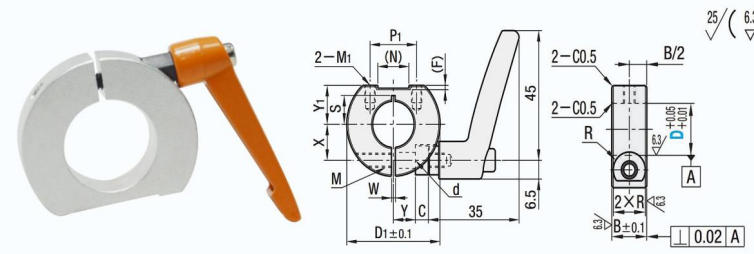
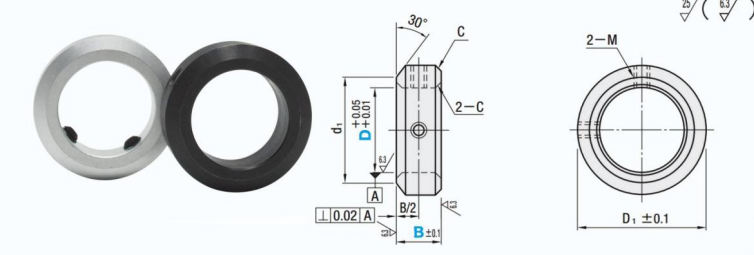
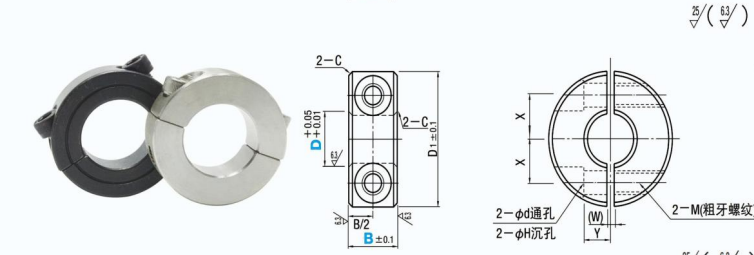
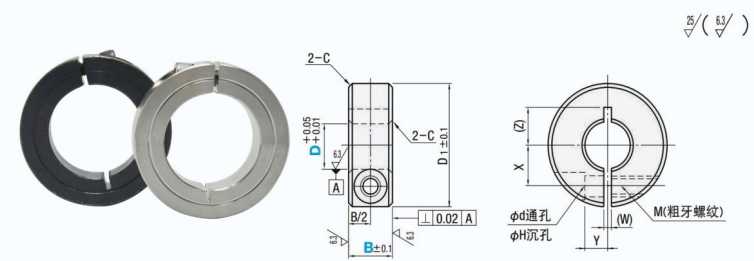
SCKLTG -----P.12



SBTB/SBTR -----P.13

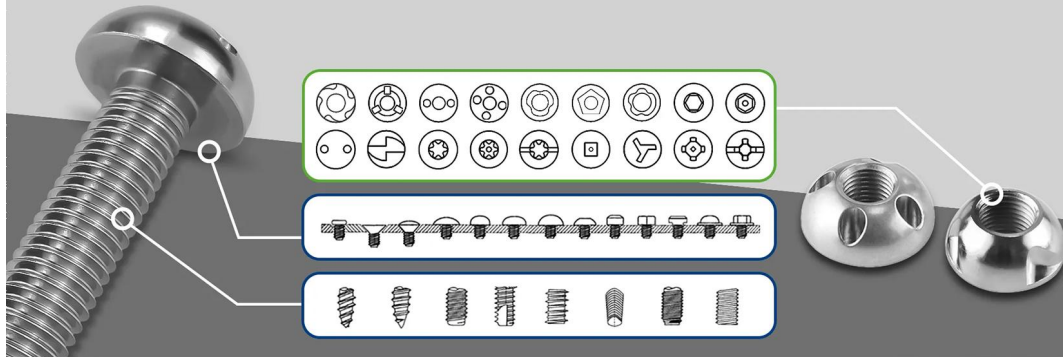


SCKLMI -----P.14



customization welcome !

Anti-theft nut/bolt/screw



Plum blossom anti-theft nut



(5) Torx Safety LOCK NUT



4-hole anti-theft nut



head torx with column screws



Triangular head bolt



Pan head torx with column screws



Half round head inner torx stud bolts



Cross Recessed Pan Head Drill Screws



Countersunk head inner torx with stud bolts



Cylindrical head hexagon socket combination bolts



Cylindrical head hexagon socket bolts



Half round head hexagon socket bolt

ALL Products

When you choose fasteners that are too large, too small, too long, too short, or need to customize special ones we can provide you with appropriate solutions



triangular groove Safety nut



Pentagonal anti-theft Safety nut



Cutting anti-theft Safety nut



Round head barrel Safety nut



Double Torque Safety Nuts



Sector One-way Safety Nuts



T-shaped Safety nut



Double Hole Safety bolts



Single Hole Safety Bolts



4-hole Safety Bolts



5 Torx Safety Bolts



Double Torque Bolts



Triangular Groove Safety Bolts



Herringbone groove bolt



One Way Safety Screw



4-angle Bolts With Column



Pentagon Safety Slotted Bolt



Double Step Safety Bolts



T-shaped Safety Bolts



Multi Tool Safety Bolts



12 Point Safety Bolts



Ring-shaped Bolts

Need Help? Chat with us

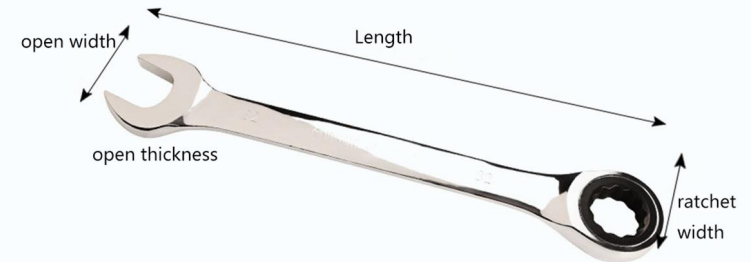


Handlebar Lock



The Handlebar lock adopts high-quality lock core, anti-drilling, anti-prying, new and practical, twisting lock, convenient and quick. After Handlebar lock is locked, the handlebar and brake will not be able to move. The Aluminium Alloy structure, anti-saw, anti-shear, anti-knock, the lock body is firmer, which discourages thieves, and guarantees the safety of the motorcycle with excellent quality. And our handlebar lock is anodized as your requested color. And our handlebar lock is designed as streamline, so it like the Decorations when it be locked on your motorcycle.

Wrench



size	open thickness	open width	handle thickness	ratchetthickness, width	Length	weight
8MM	5.2MM	17.3MM	4.1MM	6.5MM 17.8MM	140MM	49.8g
9MM	5.7MM	20.5MM	4.2MM	7.6MM 20.9MM	150MM	61.7g
10MM	6.5MM	22.5MM	4.9MM	8.2MM 22.6MM	161MM	76.3g
11MM	5.3MM	24.4MM	3.9MM	7.3MM 22.9MM	165MM	64.6g
12MM	6.9MM	27.5MM	5.2MM	9.5MM 26.5MM	176MM	111.3g
13MM	7.0MM	30.0MM	4.7MM	9.5MM 27.5MM	190MM	116.1g
14MM	7.5MM	32.0MM	4.8MM	9.8MM 29.7MM	200MM	136.2g
15MM	7.5MM	34.0MM	5.3MM	10.5MM 30.0MM	208MM	160.7g
16MM	7.7MM	36.5MM	5.3MM	10.8MM 32.2MM	217MM	185.3g
17MM	8.1MM	38.0MM	5.6MM	10.8MM 32.7MM	228MM	205.3g
18MM	7.8MM	38.7MM	5.8MM	10.5MM 34.7MM	230MM	203.5g
19MM	9.0MM	43.9MM	6.2MM	11.7MM 37.0MM	252MM	276.5g
21MM	9.9MM	45.1MM	6.6MM	13.8MM 40.8MM	253MM	323.0g
22MM	9.6MM	44.8MM	6.4MM	14.0MM 40.9MM	253MM	312.3g
24MM	10.2MM	50.7MM	7.5MM	14.7MM 47.1MM	310MM	480.5g
27MM	10.5MM	54.3MM	7.9MM	15.8MM 51.4MM	320MM	549.2g
30MM	12.8MM	58.5MM	9.7MM	17.2MM 53.6MM	345MM	758.9g
32MM	12.2MM	62.1MM	8.3MM	16.7MM 62.0MM	370MM	832.5g

Titanium screw/bolt/nut



hex



bottle hex

PRODUCT DISPLAY



socket



Tapered



flange screw bolt



socket pan head

Material: Stainless steel
Brass, Carbon steel, Aluminum,
Ti-alloy.etc.
Finish: Zinc plated, Black oxide,
Hot-dip Galvanizing, Anodizing,
etc.



shoulder



torx



countersunk



socket

aluminum screw/bolt/nut/washer



Al6063/Al7075 Aluminum alloy
Hex socket cap head
High strength, light weight

Surface finish color



Al6063/Al7075 aluminum alloy
Hex socket pan head bolt
High strength, light weight

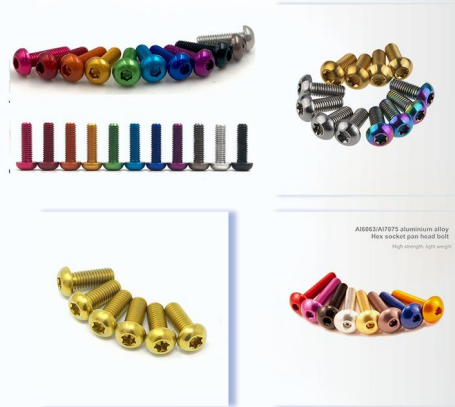
pan head



shoulder



flat head



Al6063/Al7075 aluminum alloy
Hex socket pan head bolt
High strength, light weight



Smooth thread,
all threads are checked by
stop-gauge.



Environmental protection
anodizing, color more firm,
not easy to fall off.

100% original 6063 raw materials,
better performance



Thumb nut



- 1, Exquisite craftsmanship, solid and sturdy
- 2, Various styles, support customization
- 3, Smooth surface, deep threads
- 4, Plating color options, quality assurance
- 5, Nuts and washers can be customized
- 6, Various materials available: 6061, 6063, 7075, etc.

Knob

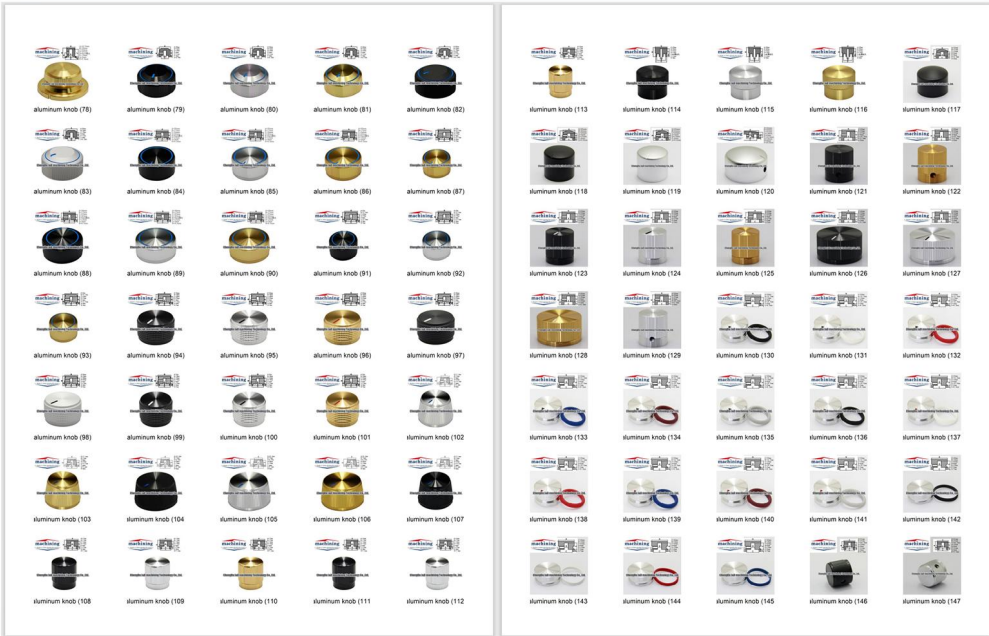


We focus on making all-metal knob, fit for 6 mm or 1/4 "of the circular shaft, D shaft,etc.

CUSTOMIZED SERVICE:

- 1, can make it in other materials : Aluminum, Steel, Stainless steel, Brass.
- 2, can make it in other bore sizes or outside sizes : 1/4",6mm, D shaft
- 3, can make it in other surfaces treatment: PVD, anodizing, black oxide, powder coating.
- 4, Knobize Logo.

Rotary knob for the amplifier, speaker, medical equipment, beauty equipment, media device, industrial devices.



Contact us for more styles of knobs !

Camera Screw



Eye screw



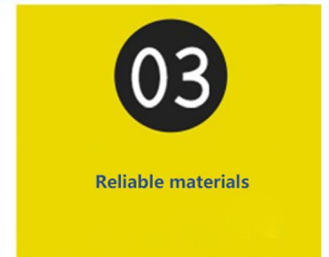
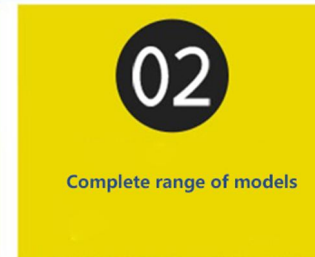
Material: Stainless steel
 Brass, Carbon steel, Aluminum,
 Ti-alloy etc.
Finish: Zinc plated, Black oxide,
 Hot-dip Galvanizing, Anodizing,
 etc.



An eye bolt is a bolt with a loop at one end. They are used to firmly attach a securing eye to a structure, so that ropes or cables may then be tied to it.



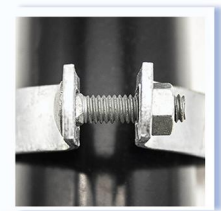
Stud/Rod



Carriage screw/bolt



Material: Stainless steel
 Brass, Carbon steel, Aluminum,
 Ti-alloy etc.
Finish: Zinc plated, Black oxide,
 Hot-dip Galvanizing, Anodizing,
 etc.



Chicago Screw



Open Hole Chicago Screw



Round Head Chicago Screw

Material: Aluminum, Stainless steel, Carbon steel, Titanium, Brass etc.
Finish: Zinc plated, Phosphating, Anodizing, etc.

ACCEPT CUSTOMIZATION



Brass Chicago Screw



brass slot



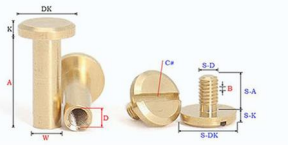
long slot



hex socket



flat cross



Shoulder Screw/Bolt



brass knurled head



long knurled

Material: Stainless steel, Brass, Carbon steel, Aluminum, Ti-alloy, etc.
Finish: Zinc plated, Black oxide, Hot-dip Galvanizing, Anodizing, etc.



titanium alloy



brass hex head



slot round head



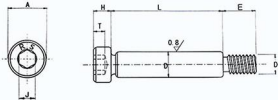
short cross



stainless steel socket



Extra long hex



T-Bolt/Nut



brass bolt



profile bolt

Material: Stainless steel, Brass, Carbon steel, Aluminum, Ti-alloy, etc.
Finish: Zinc plated, Black oxide, Hot-dip Galvanizing, Anodizing, etc.



handle bolt



carbon steel



stainless



steel nut



custom

Hex Bolt/Nut



Material: Stainless steel, Brass, Carbon steel, Aluminum, Ti-alloy, etc.
Finish: Zinc plated, Black oxide, Hot-dip Galvanizing, Anodizing, etc.



Set Screw



FLAT POINT



CUP POINT WITH KNURLED

Material: Stainless steel
Brass, Carbon steel,
Aluminum, Ti-alloy, etc.
Finish: Zinc plated, Black oxide,
Anodizing, etc.



CONE POINT



DOG POINT



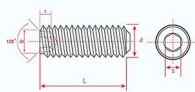
BALL POINT WITH SPRING



slot type



brass



Torx Screw/Bolt



stainless steel



countersunk head

Material: Stainless steel
Brass, Carbon steel, Aluminum,
Ti-alloy, etc.
Finish: Zinc plated, Black oxide,
Hot-dip Galvanizing, Anodizing,
etc.



brass pan head



External plum bolt



flat torx with pin



titanium alloy



Self-tapping



torx keys



Drilling and key



aluminum alloy

U-Bolt



U bolts with plate



Round U bolts

Material: Aluminum, Stainless
steel, Carbon steel, Titanium, etc.
Finish: Yellow zinc plated,
Phosphating, Anodizing, etc.

ACCEPT CUSTOMIZATION

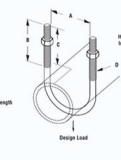


Square U bolts



Fig. B501 - Light Weight U-Bolt with 2 Hex Nuts (10LCO Fig. 111)

Size Range: Size 1/2" (12mm) thru 8" (200mm) pipe
Material: Carbon Steel
Function: Recommended for supporting or anchoring light pipe loads.
Maximum Temperature: 650°F (343°C)
Finish: Plain, Contact Cooper B-Line for alternative finishes and materials.
Order By: Figure number and finish.
Note: When furnished in Hot Dip Galvanized finish, oversize tapped hex nuts must be used.



Custom Bolt



t bolt

Material: Stainless steel
Brass, Carbon steel, Aluminum,
Ti-alloy, etc.
Finish: Zinc plated, Black oxide,
Hot-dip Galvanizing, Anodizing,
etc.



knob bolt



custom



wing bolt



Allen/Hex/Torx/Ball-Key

PRODUCT PARAMETERS

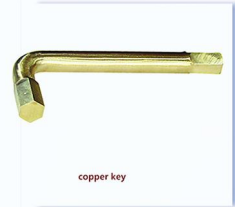


THE FOUR CORE TECHNOLOGY ADVANTAGE

1. High precision
2. High strength
3. High durability
4. High efficiency



Robust and durable



copper key

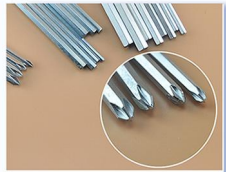


handle key

Material: Stainless steel
Brass, Carbon steel, Aluminum, Ti-alloy, etc.
Finish: Zinc plated, Black oxide, Hot-dip Galvanizing, Anodizing, etc.



hex key



cross key



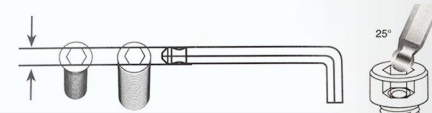
color ball head key

Package selection or customized



cncmachiningpart.en.alibaba.com

Hex Key Size	Metric	Imperial	Hex Key Size	Metric	Imperial
1.5mm	M1.6 / M2		1/16	#1	#3, #4
2mm	M2.5	M3	5/64	#2, #3	#5, #6
2.5mm	M3	M4	3/32	#4, #5	#8
3mm	M4	M5	1/8		#10
4mm	M5	M6	5/32	#10	1/4
5mm	M6	M8	3/16	1/4	5/16
6mm	M8	M10	7/32		1/2
8mm	M10	M12	5/16	3/8	7/16
10mm	M12	M16	3/8	1/2	5/8



ball head key



torx key (pin)



hex key

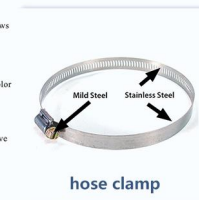
Clamp



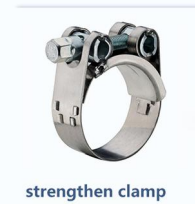
U bolt clamp



handle clamp



hose clamp



strengthen clamp



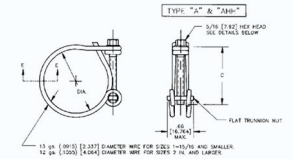
Rubber clamp



Wire Rings clamp



half clamp



Carabiner Hook

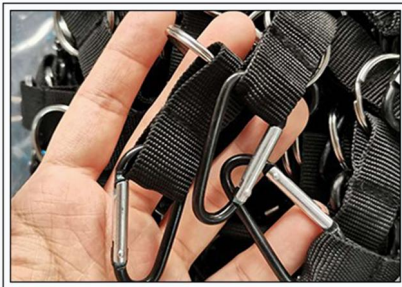


1. CARABINER

Carabiner is a specialized type of shackle, a metal loop with a spring-loaded gate used to quickly and reversibly connect components, most notably in safety-critical systems.

2. CARABINER

They are predominantly made from both steel and aluminium. Those used in sports tend to be of a lighter weight than those used in commercial applications and rope rescue. Often referred to as carabiner-style or as mini-biners, carabiner keyrings and other light-use clips of similar style and design have also become popular.



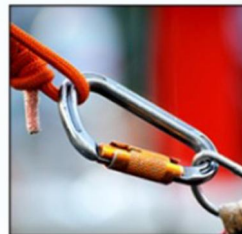
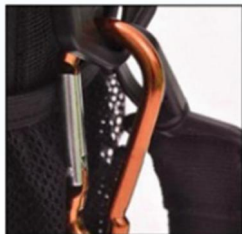
3. CARABINER

- rain proof, safe and secure
- smooth surface without burr
- complete specifications



USE

▼ CARABINER



Washers

Processing Materials



The common materials used for spring washers are spring steel, carbon steel, stainless steel or mild steel etc. Other materials such as copper, brass, beryllium copper also can be used for spring washers.

Steel: 65Mn spring steel, 70# carbon steel, 3Cr13, SS304, SS316, 65Mn or other mild steel such as Q235, Q195 etc. Used for dome spring washer, flat spring washer, wave spring washer etc.

Brass: C36000(C26800), C37700(HPb59), C38500(HPb58), C27200(CuZn37), C28000(CuZn40) Etc. Used for flat spring washer etc.

Copper: used for dome spring washer, wave spring washer, flat spring washer etc.

Beryllium copper: used for dome spring washer, wave spring washer.

TYPES WE CAN MAKE



cdjjang.en.alibaba.com

Other fasteners



Pozi Drive

Phillips

Anti-theft triangle

Slotted

Hex Socket



Torx

Torx-internal Tamber proof pin

Spanner Slotted Tamber proof

Tri-wing

Two-Hole Tamber proof



One way(Clutch) Tamber proof

Square Slot Combination

Phillips Slot Combination

Slot 6 Lobe Combination

Square Socket

